

3rd Trombone

© Eric Richards 2018 (BMI)

T.K.

Written in commemoration of the life of **Tom Kinnison** - ardent advocate and supporter of the arts in Sheridan, Wyoming.
Premiered by the USAF Falconaires jazz ensemble at Kinnison Hall, Whitney Center For The Arts - Sheridan College
Sunday, 23 September 2018

Freely; M.M. ♩ = 68

Measures 1-5: Bass clef, 4/4 time. Measure 1 has a whole rest. Measure 2 starts with a half note G2 (mf), followed by a half note A2. Measure 3 has a half note Bb2, followed by a half note C3. Measure 4 has a half note D3, followed by a half note E3. Measure 5 has a half note F3, followed by a half note G3. Measure 6 starts with a half note A3, followed by a half note B3. Measure 7 has a half note C4, followed by a half note D4. Measure 8 has a half note E4, followed by a half note F4. Measure 9 has a half note G4, followed by a half note A4. Measure 10 has a half note B4, followed by a half note C5. Dynamics: mf (measure 2), p (measure 8), f (measure 10).

SOPRANO solo

Measures 11-14: Bass clef, 4/4 time. Measure 11 has a whole rest. Measure 12 has a whole rest. Measure 13 has a half note G2 (mf), followed by a half note A2. Measure 14 has a half note Bb2, followed by a half note C3. Dynamics: mf (measure 13), p (measure 14).

Dictated

15 Funky "2nd LINE" Feel: M.M. ♩ = 100 (Swing 16ths)

Measures 15-17: Bass clef, 4/4 time. Measure 15 has a half note G2 (mf), followed by a half note A2. Measure 16 has a half note Bb2, followed by a half note C3. Measure 17 has a half note D3, followed by a half note E3. Dynamics: mf (measure 15), p (measure 16).

Measures 18-26: Bass clef, 4/4 time. Measure 18 has a whole rest. Measure 19 has a whole rest. Measure 20 has a whole rest. Measure 21 has a whole rest. Measure 22 has a whole rest. Measure 23 has a whole rest. Measure 24 has a whole rest. Measure 25 has a whole rest. Measure 26 has a whole rest. Dynamics: pp (measure 20).

**SWING
FUNK**

Measures 27-42: Bass clef, 4/4 time. Measure 27 has a whole rest. Measure 28 has a whole rest. Measure 29 has a whole rest. Measure 30 has a whole rest. Measure 31 has a whole rest. Measure 32 has a whole rest. Measure 33 has a whole rest. Measure 34 has a whole rest. Measure 35 has a whole rest. Measure 36 has a whole rest. Measure 37 has a whole rest. Measure 38 has a whole rest. Measure 39 has a whole rest. Measure 40 has a whole rest. Measure 41 has a whole rest. Measure 42 has a whole rest. Dynamics: f (measure 39).

SOLI

43

f

2nd LINE groove

47

SOLI

f

51

54

p

ff

57

4

57-60

SOLI w. Bari./Bass

61

f

64

67

ff

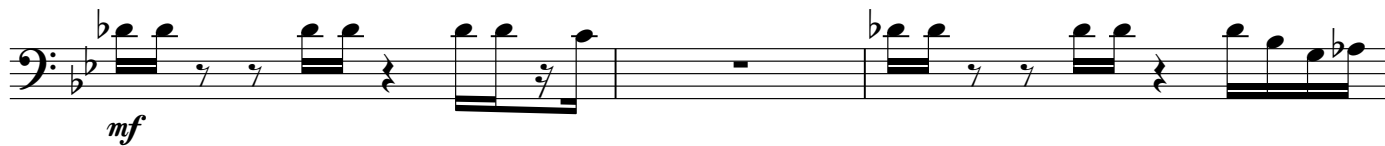
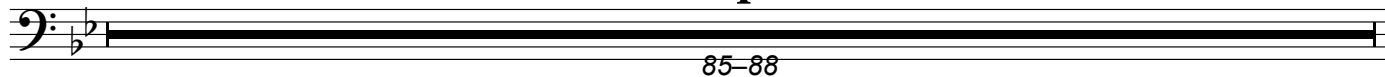
- 1

70**OPEN for SOLOS (Backgrounds as desired ON CUE)****If only 1X-1 soloist, BKGDS IN @ 94**

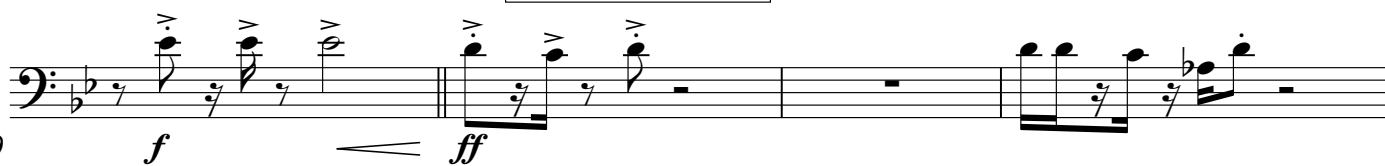
74



78

**82****SWING
FUNK****(+ BKGDS. if only 1X-1 soloist)****4****90****2nd LINE groove**

89



93



98



102

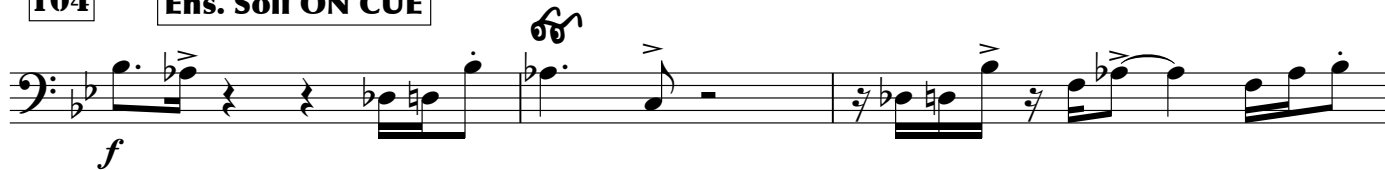
OPEN Drum Groove Solo

HANDCLAPS



104

Ens. Soli ON CUE



107



110



113



116



119



122



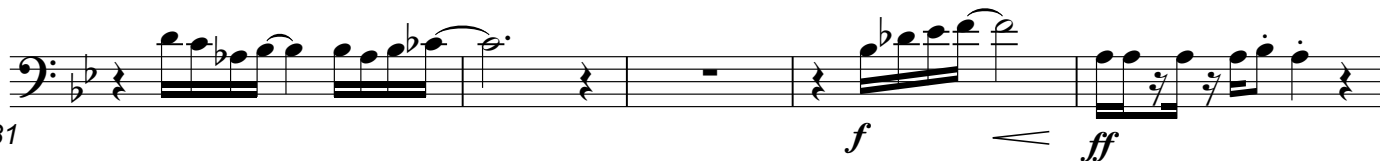
SOLI

125



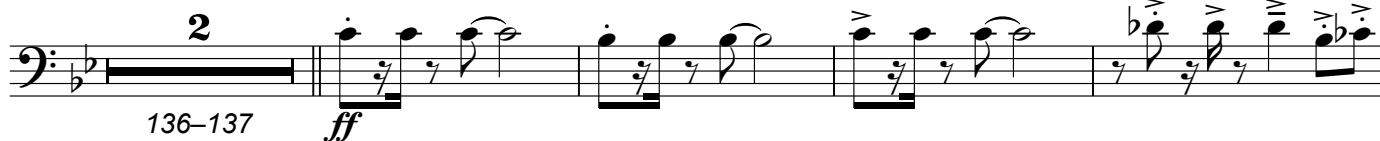


131



138

2nd LINE groove: Bring It Home!



142



152

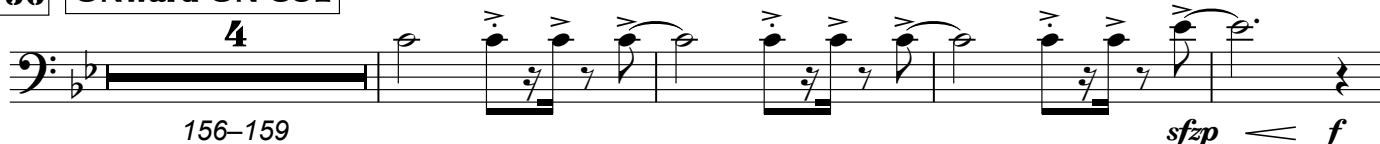
OPEN for Group JAM: "Build the SWIRL..."

146



156

ONward ON CUE



164



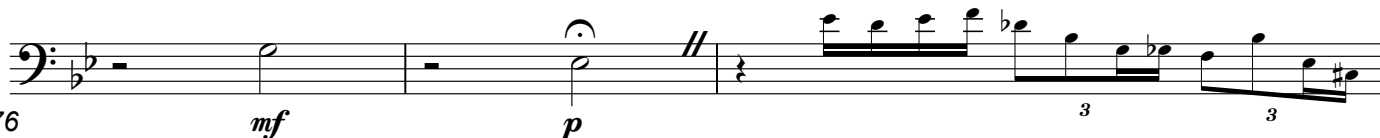
170

Freely; M.M. ♩ = 60

168



176



179



e.j.r.

12 Sep 2018